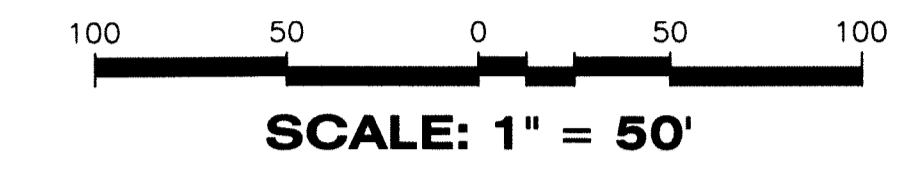
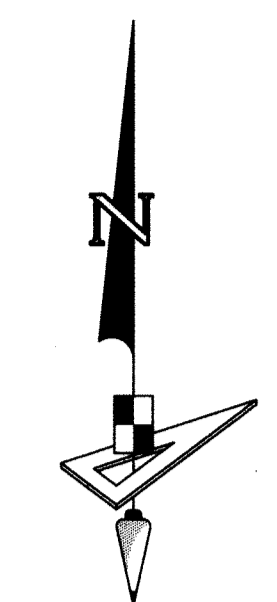


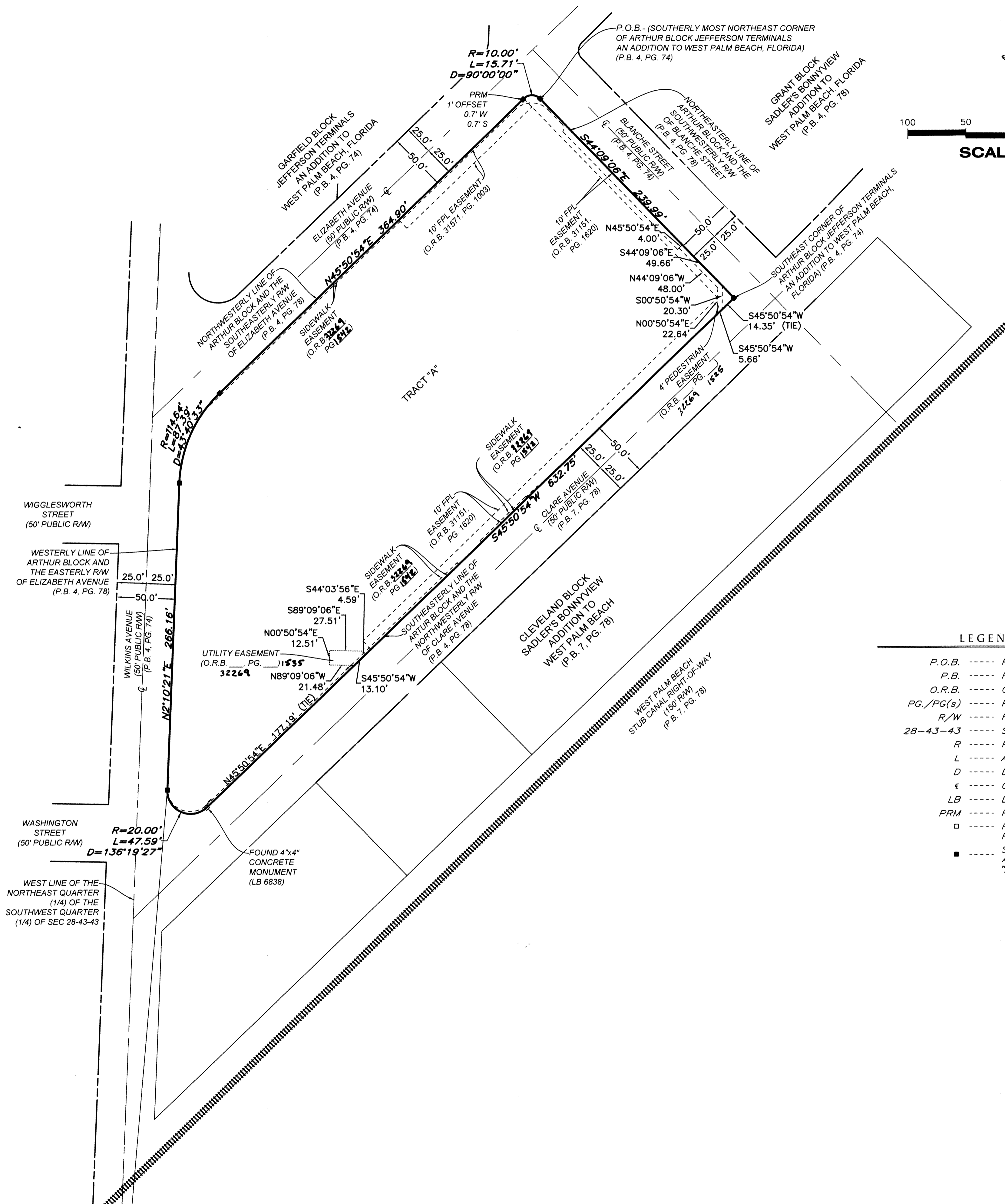
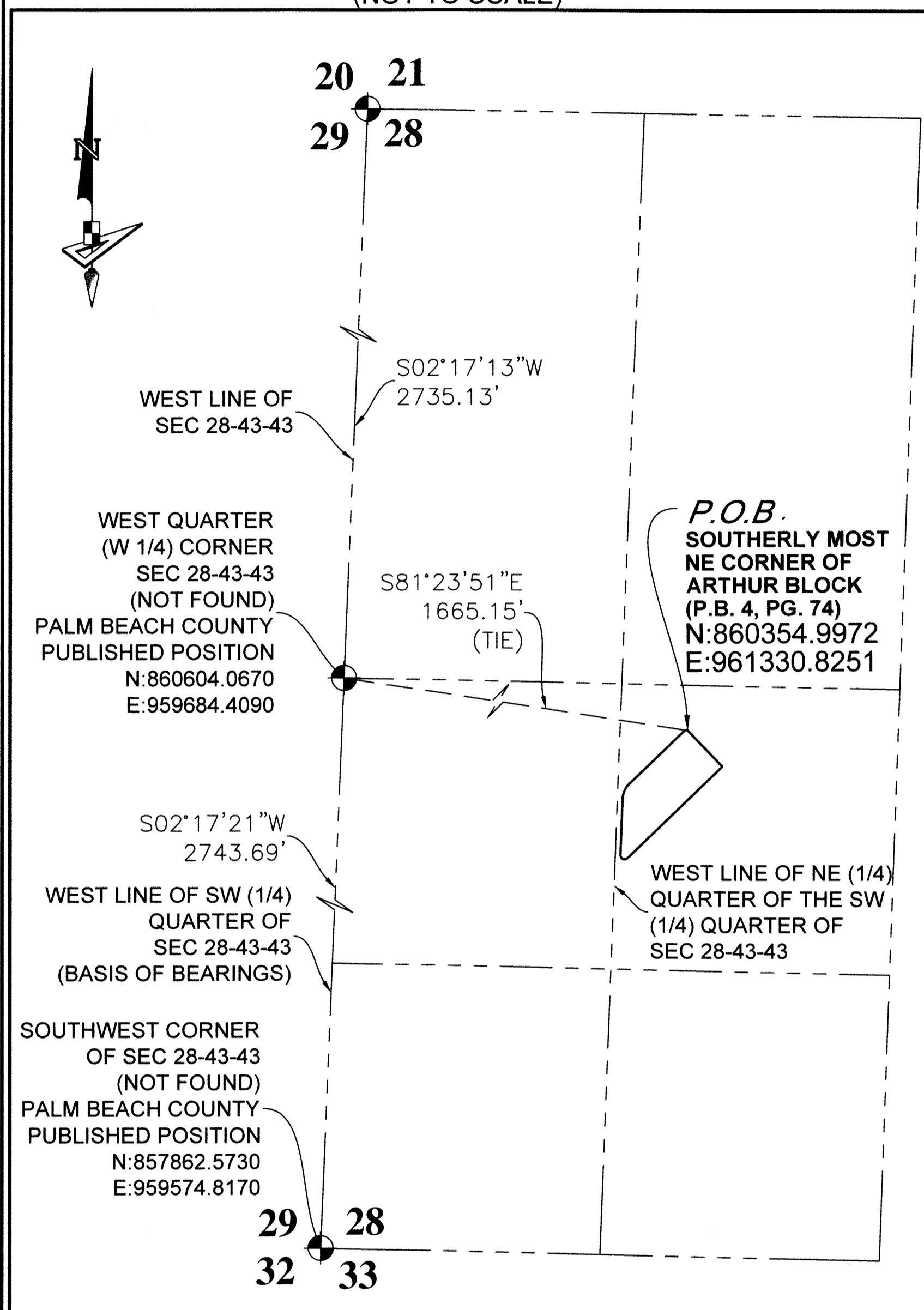
WAREHOUSE DISTRICT FLATS

BEING A REPLAT OF ARTHUR BLOCK, JEFFERSON TERMINALS, AN ADDITION TO WEST PALM BEACH, FLORIDA, RECORDED IN PLAT BOOK 4, PAGE 74, OF THE PUBLIC RECORDS OF PALM BEACH COUNTY, FLORIDA, LYING IN SECTION 28, TOWNSHIP 43 SOUTH, RANGE 43 EAST, CITY OF WEST PALM BEACH, PALM BEACH COUNTY, FLORIDA.

36



SECTION DETAIL
(NOT TO SCALE)



LEGEND

- P.O.B. ----- POINT OF BEGINNING
- P.B. ----- PLAT BOOK
- O.R.B. ----- OFFICIAL RECORDS BOOK
- PG./PG(S) ----- PAGE(S)
- R/W ----- RIGHT-OF-WAY
- 28-43-43 ----- SECTION-TOWNSHIP-RANGE
- R ----- RADIUS
- L ----- ARC LENGTH
- D ----- DELTA ANGLE
- ε ----- CENTER LINE
- LB ----- LICENSED BUSINESS
- PRM ----- PERMANENT REFERENCE MONUMENT
- ----- FOUND PERMANENT REFERENCE MONUMENT
- ----- SET MAG NAIL WITH ALUMINUM DISK STAMPED "PRM LB 7768"

